

SEATEC SUBSEA SYSTEMS BV

Industrieweg 29, 4301 RS Zierikzee
P.O. Box 39, 4300 AA Zierikzee
The Netherlands

Phone: +31 (0)111 456 100

E-mail: info@seatec.nl

www.seatec.nl

DRUK-010

Draft Transmitter

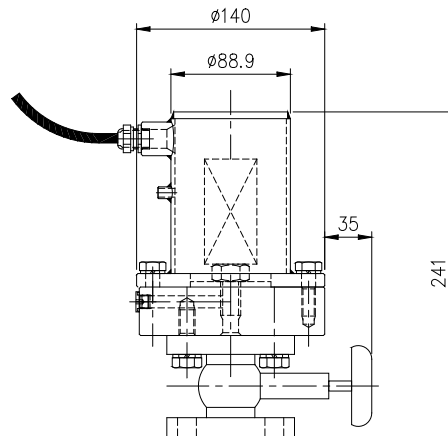


Highlights

- Pressure transmitter for harsh and abrasive environments.
- Designed for draft measurement of dredging vessels and other ships.
- Submersible down to 50 msw.
- Corrosion resistant AISI 316L stainless steel housing.
- Bronze DIN PN 16 gate / tapered slide valve with PN 10/16 DN 15 flanges (certification on request).
- Available with analogue 4...20 mA gauged or absolute pressure transmitters.
- Fitted with a stainless steel gland for a PUR connection cable with integrated vent line.
- Optionally available with all stainless steel heavy duty cable gland with integrated hose socket or separate vent hose socket with standard metal shell, standard bulkhead or micro bulkhead connector.
- Various optional (hull) mounting accessories are available like (welding) flanges and pipes.

Specifications

Mechanical		Environmental	
- Housing material	AISI 316L	- Depth rate	50 msw
- Dry weight	Approx. 10 kg	- Operating temperature	-40...+100 °C
- Gate valve	Bronze PN 16		
- Mounting flange	PN 10/16 DN15		
- Dimensions	See below		



Electrical		
<u>Sensor</u>	<u>G(auged)</u>	<u>A(bsolute)</u>
- Measurement range	max.: 0...10/16 bar, min. 0.1 bar	max.: 0...10/16 bar, min. 0.1 bar
- Accuracy ¹	± 0.1 % FS BSL typical, ± 0.2 % max.	± 0.1 % FS BSL typical, ± 0.2 % max.
- Long tem stability	± 0.1 % FS per year	± 0.1 % FS per year
- Output	4...20 mA	4...20 mA
- Supply voltage	9...30 VDC	9...30 VDC
- Compensated temp. range	-20...+80 °C.	-20...+80 °C.
- Temperature effect	± 1.5 % FS TEB ²	± 1.5 % FS TEB
- Span and zero adjustr	± 5 %	± 5 %
- Connections	2	2

¹ Combined effects of non-linearity, hysteresis and repeatability

² Temperature Error Band (% of span).

Type code definition

Type code	Specification	Sensor	Range	Interface	Connection
DRUK-010	Draft transmitter, heavy duty, IP68 < 50 m				
Sensor	Gauged, current output. Max. range: 0...10/16 bar, min. 0.100 bar Set range: Electrical connections: 2	G	0...y bar	4...20 mA	
	Absolute, current output. Max. range: 0...10/16 bar, min. 0.100 bar Set range: Electrical connections: 2	A	0...y bar	4...20 mA	
Connection	Standard bulkhead, x pin (male), stainless steel				BHxMSS
	Micro bulkhead, x pin (male), stainless steel				MCBHxMSS
	Standard metal shell bulkhead, x pin (male), stainless steel				BCR200xM
	Cable gland, stainless steel				GLAN
	Cable gland + hose socket, stainless steel				SOCK
Example	DRUK-010	G	0...0.5 bar	4...20 mA	GLAN

Optional accessories

For electrical connection, a complete program of submersible components is available, like:

- PUR cable (with integrated or separate vent line)
- Mating (subsea) connectors

For hull / process connection, various mounting accessories are available, like:

- Welding pipes
- Welding flanges
- Adaptor flanges
- Welding neck flanges