

LIER-056

High Speed CT-Winch

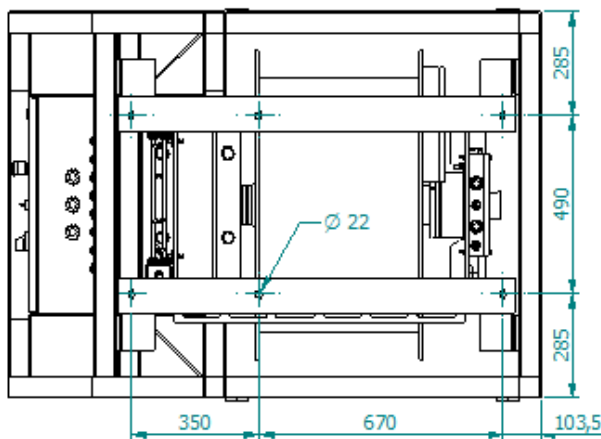
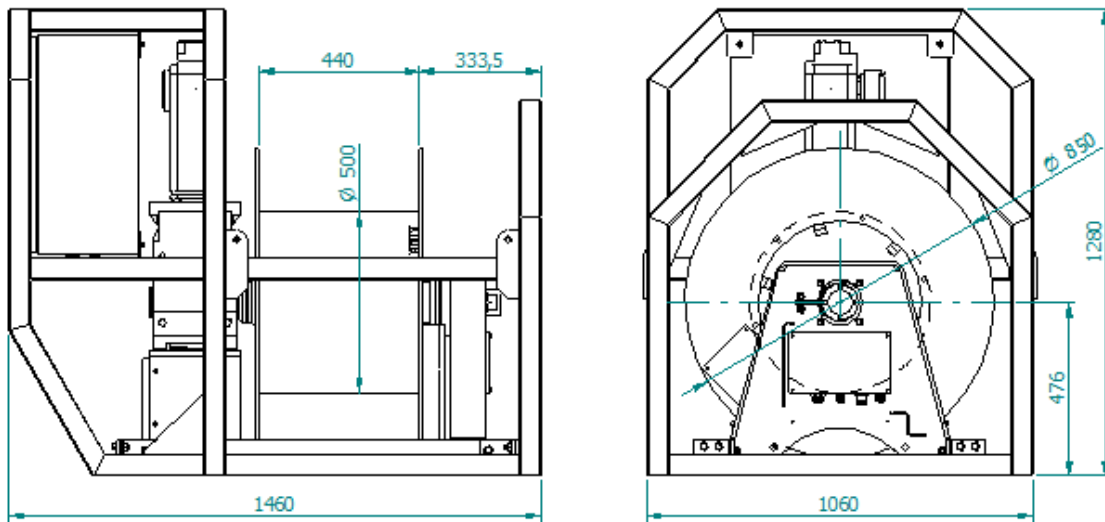


Highlights

- Designed as winch with constant tension function
- With manual winch mode and constant tension mode
- Line pull capability up to 250 kg on bottom layer (other options available on request)
- Winch speed up to 137 m/min on bottom layer in constant tension mode
- Winch speed adjustable up to 10 m/min on bottom layer in manual winch mode
- Suitable for Focal model 180 slipring type
- High tensile steel incl. 3-layer coating (316L available on request)
- Stainless steel control cabinet (AISI 316L)
- 400-440Vac 50-60Hz supply
- IP 66 ingress protection

Specifications

Mechanical		Environmental	
- Frame dimensions	See drawing below	- Temperature range	-20..+40 °C
- Drum dimensions	Ø500 x Ø850 x 440mm		
- Drum capacity	200m*		
- Cable/wire dia	19,5mm		
- Layers	5 layers		
- Weight	715 Kg		
* cable capacity depends on cable diameter			



FOOTPRINT

Electrical	
- Voltage	400-440Vac
- Power	11 kW
- Frequency	50-60Hz +/- 5%
- Slip ring	Electrical/Optical

Performance

- Line Pull	250kg on first layer 185kg on top layer
- Speed CT mode	0 - 178 m/min on top layer 0 - 137 m/min on bottom layer
- Speed manual mode	0-10 m/min on bottom layer
- Acceleration	2,37 m/s ²

Local Controls

On/off
Pay in/out (Manual mode)
Local / Remote
Emergency stop
CT on/off