

LIER-038

Survey Winch with level winder and cable length measurement unit



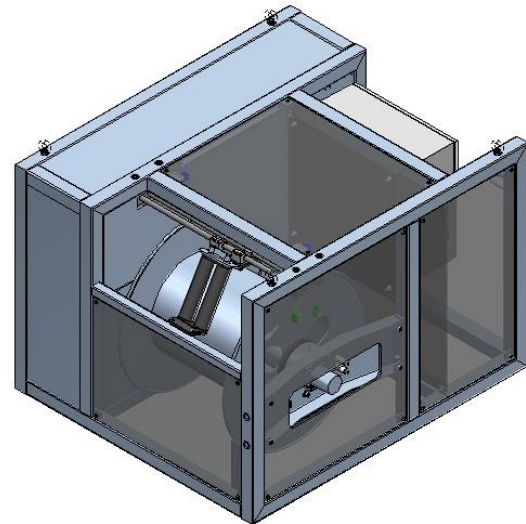
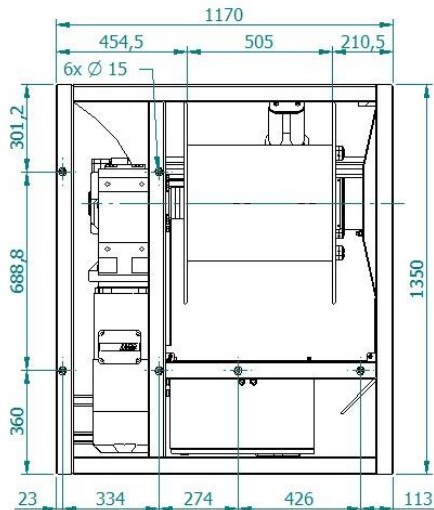
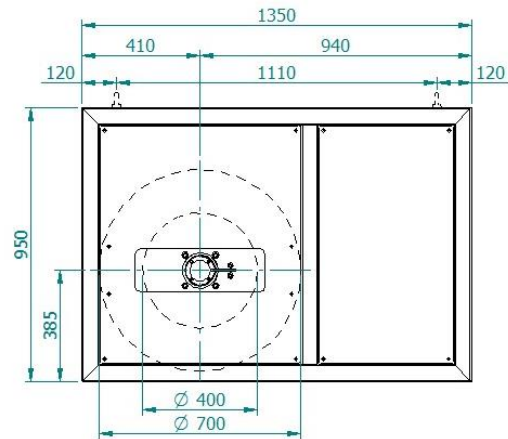
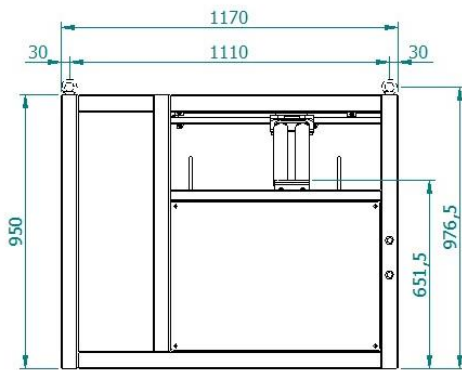
Highlights

- Designed for hydrographical purposes such as Side Scan Sonar, Sub Bottom Profilers, ROV's, CTD probes
- Line pull capability up to 750 kg on first layer (other options available on request)
- Winch speed adjustable up to 50 m/min on outer layer
- Suitable for Focal model 180 slipring
- Complete frame and drum made of AISI 316L Stainless steel
- Stainless steel control cabinet
- Motor anti-condensation heating integrated
- IP67 rated remote control pendant with up, down and emergency stop button
- 3x 380-500V AC supply 50-60Hz
- Spooling gear

Specifications

Mechanical		Environmental	
- Frame dimensions	See drawing below	- Temperature range	-10..+40 °C
- Drum dimensions	Ø400 x 505 x 700mm		
- Drum capacity	1.000m*		
- Cable/wire diameter	10,2mm		
- Layers	13 layers		
- Weight	550 kg (excl. cable)		
- Distance to first sheave	3 m (with spooler) 7,7 m (without spooler)		

* cable capacity depends on cable diameter



Electrical	
- Voltage	3x 380-500V
- Power	4,0 kW (550 Kg line pull) 7,5 kw (750 Kg line pull)
- Frequency	50-60Hz +/- 5%
- Slip ring	Suitable for use of Focal model 180

Performance

- Line Pull	550kg on first layer (4,0kW) 750kg on first layer (7,5kW)
- Speed	0 - 50 m/min on outer layer (1000 m) 0 - 27 m/min on bottom layer