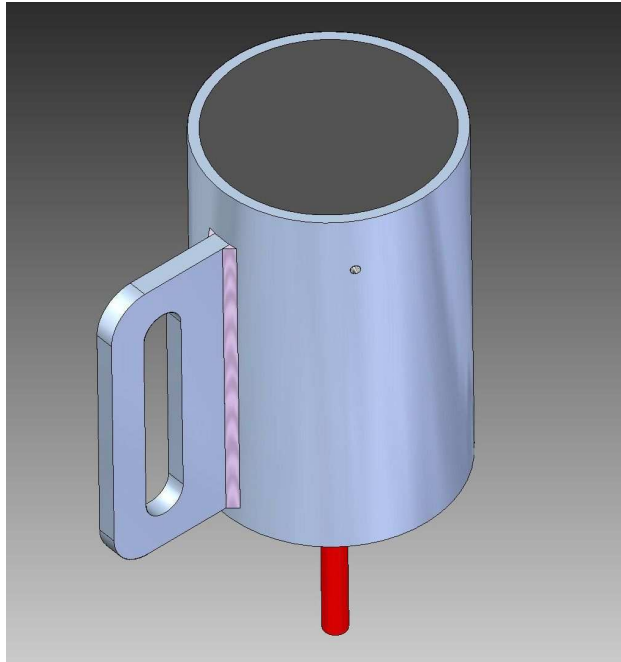


SCHA-013 LOW COST PROXIMITY SWITCH (22 MM)



Product highlights

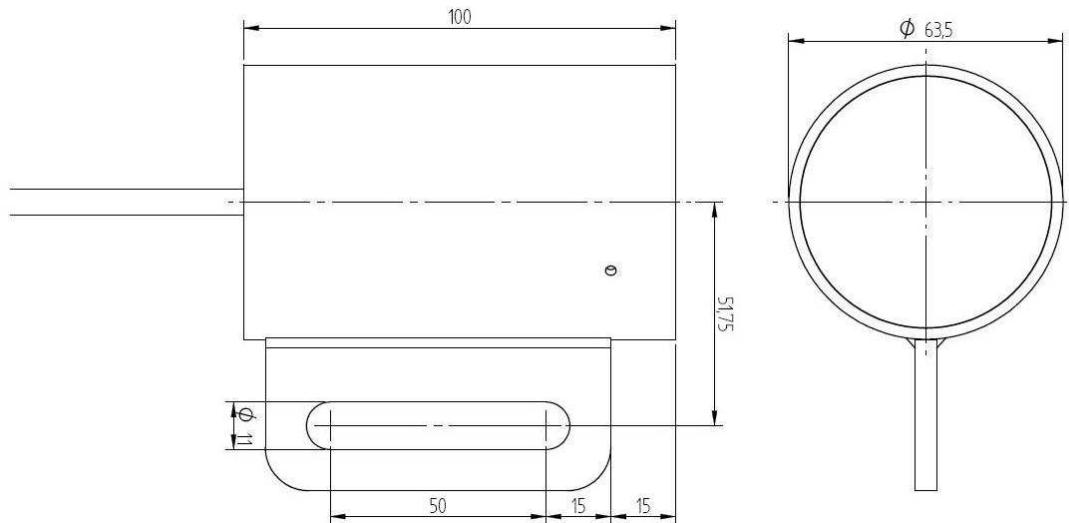
- Low cost submersible inductive proximity switch.
- Designed for detection of metal based objects on dredging vessels and offshore constructions.
- Submersible down to 100 msw.
- PU potted in a corrosion resistant AISI 316L stainless steel housing.
- Fitted with a slotted mounting bracket.
- Optionally available mating welding strip with fasteners.
- Equipped with PNP NO and NC output for a detection distance of 22 mm on steel parts.
- Casted 10 m PUR connection cable.
- Different cable length on request.

Information contained in this document is subject to change without prior notice

Specifications

Housing

- Housing material	AISI 316L	- Depth rate	100 msw
- Optional welding strip	Fe 510 D	- Operating temperature	-20...+70 °C
- Dimensions	See below	- Dry weight	Approx.2 kg



Sensor

- Detection distance ¹	SWITCH-22 22 mm max.
- Output	PNP NO and NC contact
- Supply voltage	10...55 VDC
- Switch current	400 mA max.
- No load current	< 10 mA
- Hysteresis	1...15 %
- Voltage drop	1.5 V @50 mA
- Connections	4

Connection

- Copper conductors	CAST-SC-10 4 x 1.5 mm ² , screened	- Conductor 1	+10..+55 V Supply
- Insulation	TPE	- Conductor 2	0 V Supply
- Sheath	PUR	- Conductor 3	NO Contact
- Diameter	9.7 ± 0.5 mm	- Conductor 4	NC Contact
- Standard length	10 m	- Screen	Shielding

¹ The maximum detection distance is validated for 1 mm thick steel parts St37 > 75 x 75 mm.

Type code definition

Type code	Specification	-	Sensor	-	Range	-	Interface	-	Connection
SCHA-013	Low cost submersible inductive proximity switch, IP68 < 100 m								
Sensor	Inductive proximity switch, Max. detection distance 22 mm PNP NO and NC contact, Electrical connections: 4	-	SWITCH	-	22	-	PNP	-	
Connection	Casted submersible cable, 4 x 1.5 mm ² , screened, standard length 10 m							-	CAST-SC-10 m
Example	SCHA-013	-	SWITCH	-	22	-	PNP	-	CAST-SC-10 m