

JUNC-028 Submersible Junctionbox



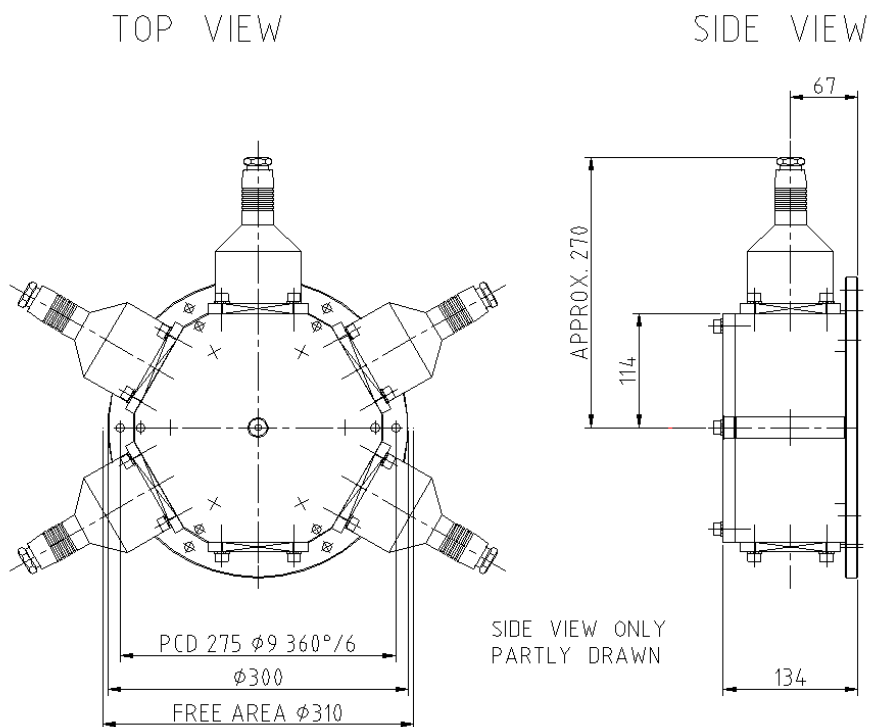
Product Highlights

- Designed for heavy duty submersible cable connections in harsh environments.
- Water depth up to 120 msw (deeper on request).
- Housing made of corrosion resistant stainless steel (AISI 316 L).
- Provided with 6 mounting holes in the bottom flange.
- To be delivered with max. 6 flanges for connectors or cable glands (adjustable).

Information contained in this document is subject to change without prior notice

Specifications

Dimensions



Junction box:

Mechanical

Weight box:	15 kg
Flanges:	6
Weight blind flange:	1 kg
Material:	AISI 316 L

Environmental

Water depth rating:	120 msw
Temperature:	-20°..+85° C

Penetrator / gland:

Mechanical

Weight	2.5 kg
Material	AISI 316 L

Electrical

Contacts	9
Max. voltage	500 V
Max. current	10 A / contact
Wire size	AWG18
Isolation	Teflon
Coding	Colour

Order information

Please specify the connectors, glands and cable diameters.

Information contained in this document is subject to change without prior notice