

SCHA-012 Ultrasonic Proximity Sensor



Product Highlights

- Distance sensor for acoustic reflective mediums as well solid as fluid.
- Field programmable.
- RS232 or 485 serial connection, analog voltage or current output and NPN/PNP switches.
- Mounted in a stainless steel seawater resistant housing for marine and offshore use.
- Maximum water depth 50 m (specifications to be defined).
- Suitable for harsh environments.
- Mountable with standard pipe clamps.
- Standard delivery with 3m cable (customer specific on request).
- Detection range from 102 mm up to 4,3 m max.
- Operating voltage 10-30 VDC.

Information contained in this document is subject to change without prior notice

Specifications

Mechanical

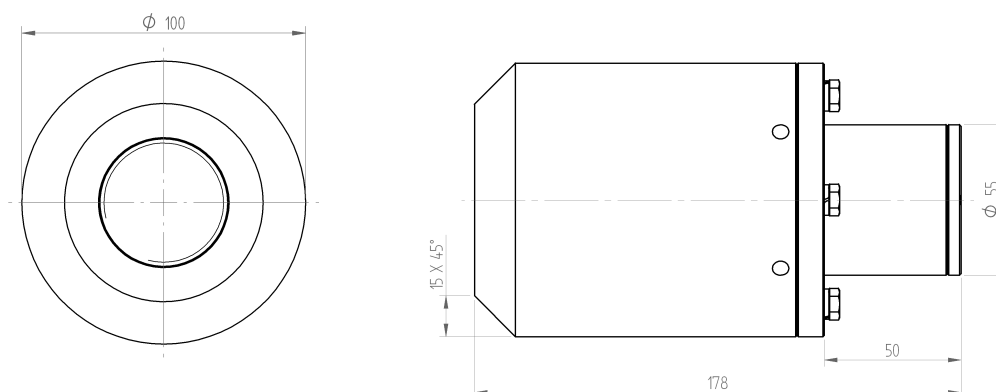
- Detection distance¹ 0,102...4,3 m (dry)
- Housing SS 316 L / PVDF
- Cable length 3 m

Environmental

- Temperature range -40..+70 °C
- Rated water depth 50 m (spec. TBD).

Electrical

- Power 10..30 VDC / 1W
- Analog output 0...10/5 V, or 4...20mA adjustable
- Switches 1 x NPN and 1 x PNP, 150 mA /40VDC
- Serial output RS232 or RS485
- Cable TBD



Order information

Type nr.	Output
SCHA-012-232	RS232
SCHA-012-485	RS485